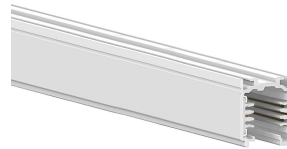


OTR TRACKS RAILS STANDARD



Part number 310822
Finish: WH-87 / White / Textured



Description

The track system with 3 switches is a complete installation system designed for stores, supermarkets, public facilities, museums.

- All designs can be easily implemented, and assembly is facilitated by the use of tracks and standard accessories

- Designed for exposed, recessed or suspension installation, and the luminaires can be easily moved, changed or modified

- Tracks and accessories are available in the shades white (BW), grey (AL) and black (NZ)

- The indication "earthing conductor on the right, left, inside or outside" for power supply units, corner and T- derivations are based on the earthing conductor's position on the track. The position of the earthing conductor on the track depends on the visual direction. The visual direction follows the operating direction of the system on the cross cup of the track that opens downwards

- Compatible with 3F "standard" adaptors that do not use DIM

- The OTR binary system is a mixed three-phase system with two additional conductors for the management of any signal (e.g. DIM 1-10 V, DALI, DMX, LON, EIB, etc).

Photometric data

Technical drawings



MANDATORY ACCESSORIES

9001 - OTR END - FEED RIGHT



310758
Feeder - L - right mechanical wrench /
left grounding

White RAL9010

9002 - OTR END - FEED LEFT



310759
Feeder - R - right mechanical wrench /
right grounding

White RAL9010

9003 - OTR TK CONNECTOR



310713
Through joint

White RAL9010

9003-M - OTR TK CONNECTOR ONLY MECHA



310667
Insulating connection

White RAL9010

9010 - OTR MIDDLE-FEED



310827
Direct joint

White RAL9010

9018 - OTR FLEXIBLE CORNER



310849
Flexible joint

White RAL9010

9011 - OTR L - FEED INT



310832
L-shaped joint - internal mechanical
wrench / external grounding

White RAL9010

9012 - OTR L - FEED EXT



310833
L-shaped joint - external mechanical
wrench / internal grounding

White RAL9010

9013 - OTR T - FEED EXT LEFT



310858
T-shaped joint - left mechanical
wrench / right grounding

White RAL9010

9014 - OTR T - FEED EXT RIGHT



310859
T-shaped joint - right external
mechanical wrench / left internal
grounding

White RAL9010

9015 - OTR T - FEED INT LEFT



310860
T-shaped joint - left internal
mechanical wrench / right external
grounding

White RAL9010

9016 - OTR T - FEED INT RIGHT



310861
T-shaped joint - right internal
mechanical wrench / left external
grounding

White RAL9010

9017 - OTR X - FEED



310876
X-shaped joint
White RAL9010

9001/115



310581
Gasket for feeder
White RAL9010

9004



310617
Closing cap with locking screw
White RAL9010

9000/H



310630
Suspension hook
White RAL9010

S-9000/GP



310637
Additional protective sheath (1 m)
White RAL9010

S-9000/113



310653
Short suspension clamp (40 mm)
White RAL9010

S-9000/123



310728
Long suspension clamp for use with
through joint (100 mm)

White RAL9010

S-9000/313



310655
Short suspension clamp (25 mm)

White RAL9010

S-9000/333



310730
Long suspension clamp (180 mm)

White RAL9010

S-9000/131



310698
Ceiling-mounting clamp

White RAL9010

S-9000/132



310642
Ceiling-mounting clamp for
suspensions

9000/231



310740
Clamp with automatic tensioner

9000/312-LA



311048
Short suspension clamp with hole for
automatic tensioner (35 mm)

White RAL9010

9000/312-SV



311051
Short suspension clamp with hole for
cable with ball terminal (35 mm)

White RAL9010

9000/322-LA



311054
Medium suspension clamp with hole
for automatic tensioner (100 mm)

White RAL9010

9000/322-SV



311057
Medium suspension clamp with hole
for cable with ball terminal (100 mm)

White RAL9010

9000/332-LA



310738
Long suspension clamp with hole for
automatic tensioner for use with
through joint (180 mm)

White RAL9010

9000/332-SV



311077
Long suspension clamp with hole for
cable with ball terminal for use with
through joint (180 mm)

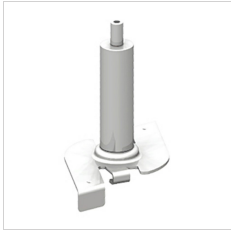
White RAL9010

S-9000/111



310625
Steel clip for mounting on ceiling

S-9000/114-T



310744
Clip with automatic tensioner for
quick mounting

White RAL9010

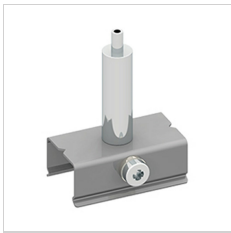
S-9000/115



310651
Clip for quick mounting

White RAL9010

S-9000/116



310699
Clamp with automatic tensioner

S-9000/118



310696
Clip for quick mounting with M6
tensioner

White RAL9010

S-9000/119-TB



310689
Clip for quick mounting of track on T-
bar

White RAL9010

S-9000/5



310613
Plastic cover for clips and clamps

White RAL9010

9000/211



310634
Steel cable (Ø 1.5 mm - 1.5 m length)



310643
Steel cable (Ø 1.5 mm - 2 m length)



310657
Steel cable (Ø 1.5 mm - 3 m length)



310718
Steel cable (Ø 1.5 mm - 5 m length)

9000/211-S



310647
Steel cable (Ø 1.5 mm - 1.5 m length)
with ball terminal



310658
Steel cable (Ø 1.5 mm - 2 m length)
with ball terminal



310668
Steel cable (Ø 1.5 mm - 3 m length)
with ball terminal



310726
Steel cable (Ø 1.5 mm - 5 m length)
with ball terminal



310741
Steel cable (Ø 1.5 mm - 6 m length)
with ball terminal

9000/218



310665
M5 automatic tensioner with lateral
hole, in chromed brass

9000/213



310671
Automatic hook tensioner, in nickel-plated brass

9000/214



310693
Automatic locking tensioner, in nickel-plated brass

9000/215



310619
Screw tensioner, in nickel-plated brass

9000-KIT2 - 1,5 m



310778
Bracket for mounting on ceiling, screw tensioner, plastic ceiling rose, Ø 1.5 mm 1.5 m-long steel cable with ball end, clip for quick mounting

White RAL9010

9000-KIT2 - 3 m



310787
Ceiling-mounting bracket, screw tensioner, plastic ceiling rose, Ø 1.5 mm 3 m-long steel cable with ball end, clip for quick mounting

White RAL9010

9000-KIT2 - 5 m



310813
Bracket for mounting on ceiling, screw tensioner, plastic ceiling rose, Ø 1.5 mm 5 m-long steel cable with ball end, clip for quick mounting

White RAL9010

9000-KIT4 - 1,5 m



310801
Metal ball ceiling rose with hole, Ø 1.5
mm 1.5 m-long steel cable with ball
end, with automatic tensioner

9000-KIT4 - 3 m



310805
Metal ball ceiling rose with hole, Ø 1.5
mm 3 m-long steel cable with ball
end, with automatic tensioner

9000-KIT4 - 5 m



310831
Metal ball ceiling rose with hole, Ø 1.5
mm 5 m-long steel cable with ball
end, with automatic tensioner

9000-KIT6 - 1,5 m



310781
Screw tensioner, plastic ceiling rose, Ø
1.5 mm 1.5 m-long steel cable with
ball end, bracket with milled hole and
automatic tensioner

White RAL9010

9000-KIT6 - 3 m



310794
Screw tensioner, plastic ceiling rose, Ø
1.5 mm 3 m-long steel cable with ball
end, bracket with milled hole and
automatic tensioner

White RAL9010

9000-KIT6 - 5 m



310810
Screw tensioner, plastic ceiling rose, Ø
1.5 mm 5 m-long steel cable with ball
end, bracket with milled hole and
automatic tensioner

White RAL9010

9000-P3-KIT4 - 1 m



310770
Bracket for mounting on ceiling, M6
nut, plastic ceiling rose, M6 1 m-long
threaded bar with cover sheath

White RAL9010

9000-P2



310736
Bracket with M6 tensioner and plastic
cover

White RAL9010

9000/3



310603
Plastic ceiling rose for Ø 1.5 mm steel
cable

White RAL9010

9000/4



310606
Plastic ceiling rose for threaded bar in
M6 steel

White RAL9010

9000/216



310644
Metal ball ceiling rose with hole

9009



310751
6-Conductor DALI adapter (3-phase +
control system) (maximum load 100 N
= 10.2 kg)

White RAL9010

9009-4



310725
4-Conductor adapter (3-phase)
(maximum load 100 N = 10.2 kg)

White RAL9010

S-9209



310764
Asymmetric 6-conductor Dali adapter
(3-phase + control system) (maximum
load 100 N = 10.2 kg)

White RAL9010

9209-4



310737
Asymmetric 4-conductor adapter (3-
phase) (maximum load 100 N = 10.2
kg)

White RAL9010

9409-4



311060
Asymmetric 4-conductor adapter (3-
phase) (maximum load 50 N = 5.1 kg)

White RAL9010

9409-4-DRI



311063
Compact 4-conductor adapter with
integrated driver (3-phase) (100-850
mA - max. 40 VDC)

White RAL9010

9909-4-DRI



310888
Integrated 4-conductor adapter with
integrated driver (3-phase) (100-850
mA - max. 40 VDC)

White RAL9010

9000/BP-D



310845
Adapter ceiling-mounting base
(without using the track)

White RAL9010

9000/BR



310830
Adapter suspended ceiling-mounting
base (without using the track)

White RAL9010

S-9000/M



310678
Mechanical adapter

White RAL9010

S-9000/BC



310624
External cable clamp with plastic grub
screw

White RAL9010

S-9000/D



310609
Nut for M10 connector



310610
Nut for M13 connector

9009/IP40



310592
IP40 Housing for symmetrical adapter

White RAL9010

S-9000



310638
Aluminium M10 connector for adapter



310639
Aluminium M13 connector for adapter

S-9000/SC

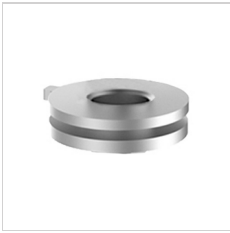


310662
Aluminium M10 connector without collar for adapter



310663
Aluminium M13 connector without collar for adapter

S-9000/FI



310648
Aluminium M10 connector with internal thread for adapter

9009/T-INS



310862
Adapter wiring insert

9009/T-HAN



310846
Handle for adapter wiring insert

9009/10



310586
Internal cable clamp for symmetrical adapter

White RAL9010

9009/51



310656
Aluminium ring with block grub screw
to prevent twisting of adapter
connectors

9209/IP40



310593
IP40 Housing for asymmetrical
adapter

White RAL9010

9209/20



310587
Internal cable clamp for asymmetrical
adapter

White RAL9010

9909-DRI/11



310600
Plastic friction ring for retractable
adapter

White RAL9010

9909/M10



310731
M10 Terminal for retractable adapter

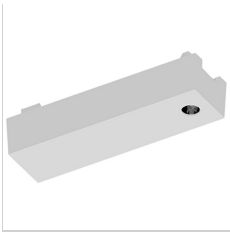
9209/BD-M



310720
LED driver box. For use with
asymmetrical adaptor 9209.... Max.
size for driver housing: 116x52x30 mm

White RAL9010

9209/BD-L



310724
LED driver box. For use with
asymmetrical adaptor 9209.... Max.
size for driver housing: 116x52x30 mm

White RAL9010

9209-BD/3



310608
Plastic cover and screws for LED
driver box connectors

White RAL9010

9209-BD

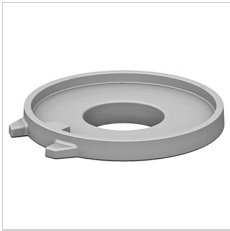


310669
Aluminium M10 connector for LED
driver box



310670
Aluminium M13 connector for LED
driver box

9209-BD-10/4



310595
Adapter for M10 connector for LED
driver box

White RAL9010

9209-BD-13/4



310597
Adapter for M13 connector for LED
driver box

White RAL9010

DRV BX KIT-BD/M10



310708
Kit for LED driver box - complete set
for M10 mounting

White RAL9010

DRV BX KIT-BD/M13



310710
Kit for LED driver box - complete set
for M13 mounting

White RAL9010

9909-DRI



310897
Integrated 6-conductor DALI adapter
with integrated driver (3-phase +
control system) (350-500 mA - max. 50
VDC)

White RAL9010